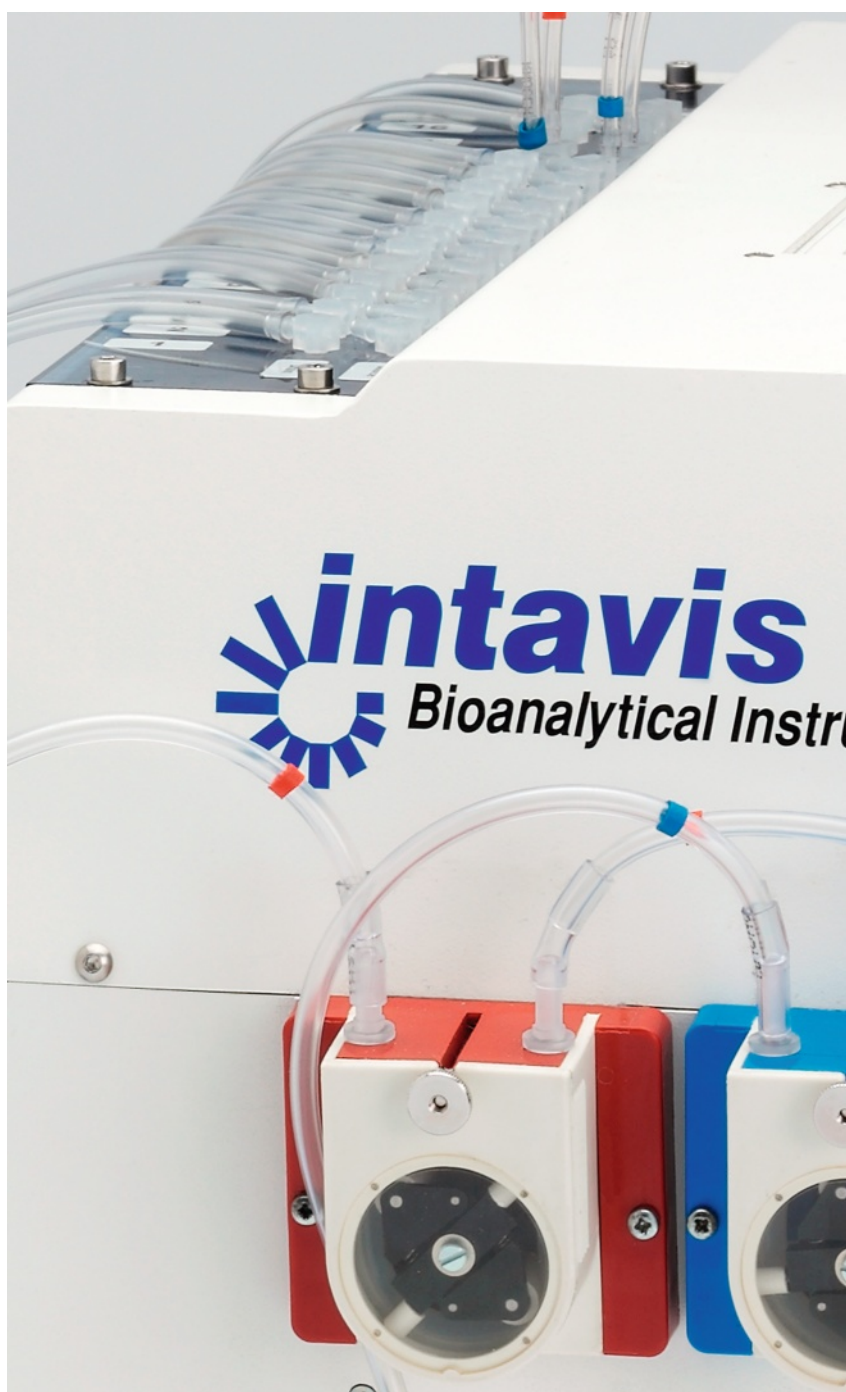
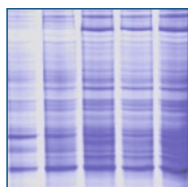
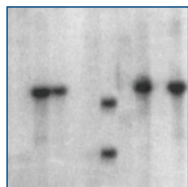
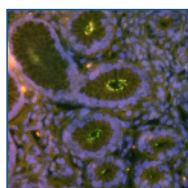
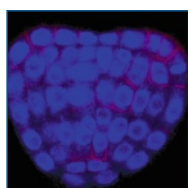


BioLane HTI 16V

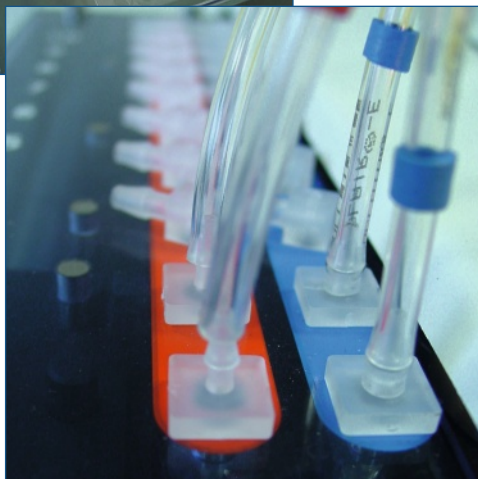
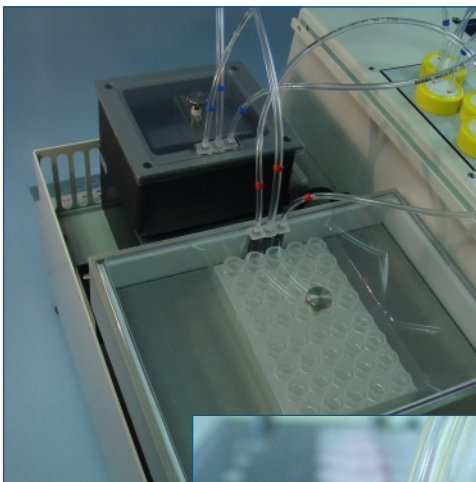
Automated Incubation: Two systems in one



Two systems in one

Being composed of two systems in one, the **BioLane HTI 16V** is the solution for automating tedious routine work such as in situ hybridization, immunohistochemistry, blot or gel staining. Both independent systems are able to process individual protocols simultaneously. Up to 16 different solutions including cooled and heated buffers provide maximum convenience, even for complex protocols. Precise control of incubation time and temperature guarantees reproducible results.

- Reproducible processing of complex protocols
- Handling similar to manual procedure
- Uses standard laboratory buffers
- Precise temperature control



Maximum versatility for a wide range of applications

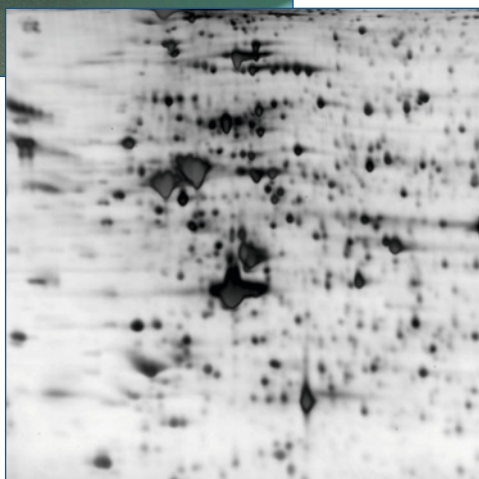
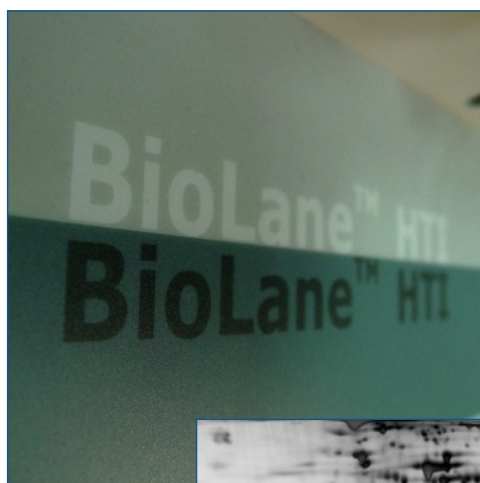
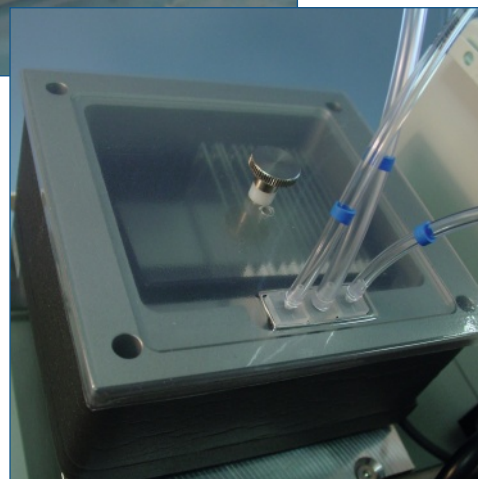
The two systems in one feature and the easy way of swapping from one application to another within a minute make the **BioLane HTI 16V** the perfect choice for the modern multi-application lab. Processing whole mount or section in situ hybridization, performing immunohistochemistry, gel staining, Western, Southern or Northern blots has never been that easy. Simultaneous processing of two completely different protocols is feasible and readily pre-programmed.

- Exchangeable tray units for different applications
- Simultaneous processing of two individual protocols
- Automatic processing of in situ hybridization and immunohistochemistry
- Staining and washing of Western, Northern and Southern blots

***In situ* hybridization and immunohistochemistry**

Whole mount samples such as complete specimens and organs, are processed in individual incubation baskets in the incubation trays. Precise control of temperature and incubation time guarantees highly reproducible processing. Simple exchange of the tray unit against a slide unit allows the processing of sections on slides as well.

- Gentle liquid exchange for delicate specimens
- Processing of up to 48 samples per tray
- Configurations for different specimen sizes available
- Recovery of solutions



Western, Southern, Northern blots and gels

The **BioLane HTI 16V** can be used for processing a variety of blots and gels in different sizes. Exchange of the standard tray unit against an extra large one allows processing of blots and gels up to the size of a 2D gel. Reliable temperature control down to 4 °C enables use of even very delicate antibodies.

- Staining of blots and gels from mini gel size up to 2D gel size
- Recovery of primary and secondary antibodies possible
- Minimum amount of manual work
- Reliable and reproducible results

System 1 Idle 23.52 °C 1.00:17:10		InSitu Tray: Extra Small Admin										
		1	2	3	4	5	6	7	8	9	10	11
		2xSSC					2xSSC					
		Source: valve4					Source: valve4					
		Vol. [ml] 16.00					Vol. [ml] 16.00					
		Agitation [1/min]: 25					Agitation [1/min]: 25					
		Agitation Pause: No					Agitation Pause: No					
		Temp. [°C]: 60.00					Temp. [°C]: 60.00					
		Pause after Incub.: No					Pause after Incub.: No					
		Pause bef. Incub.: No					Pause bef. Incub.: No					
		Time: 00:20:00					Time: 00:20:00					
		Drain: valve16					Drain: valve16					
		00:00:00					00:00:00					



Intuitive operation software

The **BioLane HTI 16V** operated by a Windows CE™ based software running on an internal PDA.

- Graphical user interface
- Remote control for operating the instrument from your computer
- Easy method adaptation
- Real-time monitoring of instrument operation
- Detailed documentation of each run

Specifications

Sample size:	0.06 - 12 mm for whole mounts and vibratome sections
Standard slides:	75 x 25 x 1 mm or 76 x 26 x 1 mm
Temperature range:	4 - 70 °C for all applications
Buffer positions:	16
Cooled/heated positions:	4x 50 ml or 125 ml at 4 °C / max. 3x 500 ml or 2x 1000 ml at 70 °C
Volume per step:	5 - 500 ml; cooled positions 1 - 50 ml or 125 ml
Power:	230/240 V, 50 Hz or 110/115 V, 60 Hz
Dimensions:	46 x 42 x 32 cm (width x depth x height) [18.1 x 16.5 x 12.6 inches]
Weight:	36 kg

Sample rack configurations:

Blots:	20 mm frame: 80 x 85 mm; 2 times 80 x 85 mm; 135 x 85 mm; 2 times 135 x 85mm; 205 x 140mm 26 mm frame: 135 x 87.5 mm; 2 times 135 x 87.5 mm; 70 x 87 mm; 65 x 42 mm 2D unit (available separately): 270 x 210 mm (System 1/2)
In Situ:	Nylon mesh baskets, inner core diameter 9.0 mm, mesh size 53 µm; 8-, 20-, 40-well PP plate Nylon mesh baskets, inner core diameter 13.0 mm, mesh size 53 µm; 6-, 12-, 24-well PP plate for screens: 48-well plate or 1/2 48-well plate with nylon mesh bottom, mesh size 53 µm

More information: Please contact us at info@intavis.com or visit www.intavis.com

INTAVIS Bioanalytical Instruments, Widdersdorfer Str. 248-252, 50933 Köln, Germany
Phone: +49-221-502 94 68-0, Fax: +49-221-502 94 68-9
USA Phone: 1-773-572-5799, Fax: 1-773-305-1845, Toll free: 1-800-587-0085